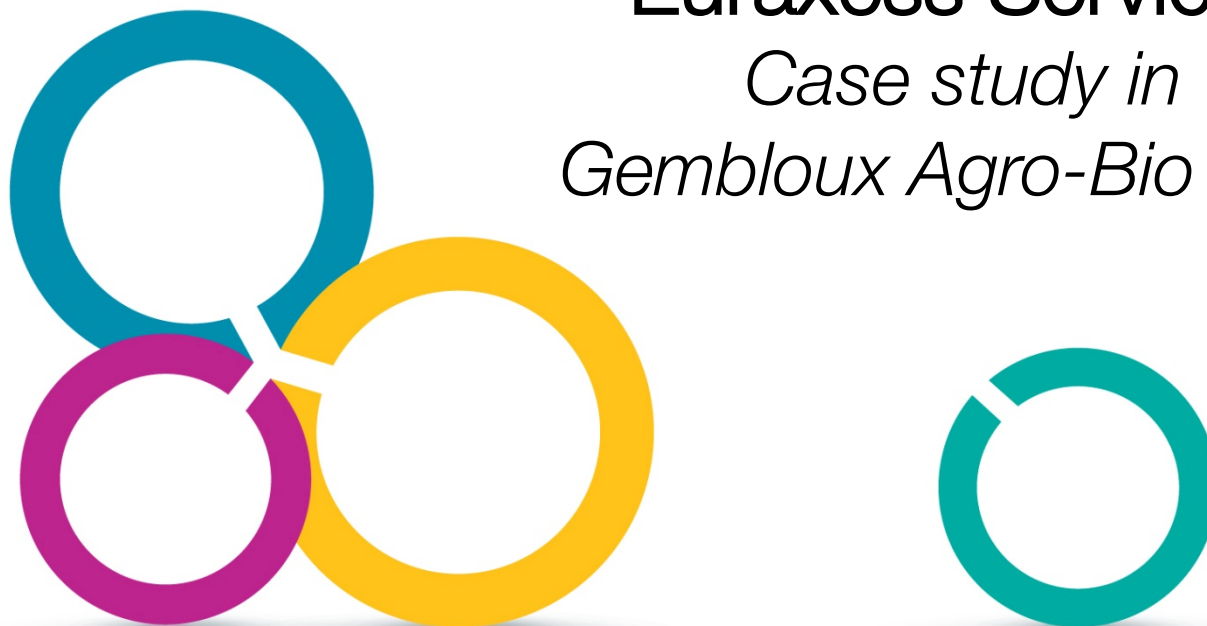


# Euraxess Services

## *Case study in Gembloux Agro-Bio Tech*



L. de Potter, Head of International Relations for GxABT / PACODEL  
Executive Secretary – [laurent.depotter@ulg.ac.be](mailto:laurent.depotter@ulg.ac.be)



# Objective of the presentation

Erasmus Staff Training, Liège, 3/2015

Université  
de Liège



- Show how the **Gembloux campus** organises its international welcome centre
- How the welcome centre relates to the Euraxess Service centre in Liège, in order to increase its efficiency and deliver services tailored to the **specificity of the localisation** as well as of the researchers from **the South**



HR EXCELLENCE IN RESEARCH



Gembloux Agro-Bio Tech  
Université de Liège





# Structure of the presentation

Erasmus Staff Training, Liège, 3/2015

Université  
de Liège



## 1. Introduction to the Faculty

2. Presentation of the integration process into the ULg and specificities
3. Importance of an Euraxess contact point in Gembloux
4. Examples of difficult situations



HR EXCELLENCE IN RESEARCH



Gembloux Agro-Bio Tech  
Université de Liège





# Introduction to the faculty

Erasmus Staff Training, Liège, 3/2015

Université  
de Liège



HR EXCELLENCE IN RESEARCH



Gembloux Agro-Bio Tech  
Université de Liège





# Students

Erasmus Staff Training, Liège, 3/2015

- 1300 students
- 282 PhD students
- 41% of female students
- 30% of foreign students
- More than 50 international mobility agreements





# Teaching within GxABT

Erasmus Staff Training, Liège, 3/2015

Université  
de Liège



1st cycle

3 years - 180 ECTS

Bachelor in Engineering  
Science, orientation **bioscience  
engineering**

Bachelor in  
**landscape  
architecture**

2nd cycle

2 years - 120 ECTS

Master in bioscience engineering

- Environment
- Forests and natural areas
- Chemistry and bioindustries
- Agricultural sciences

Master in  
**landscape  
architecture**

Master in **agriculture  
and bioindustries**

- Microbial biotechnology
- Xylochemistry and biorefining

3rd cycle

4 years - PhD in 120 ECTS



HR EXCELLENCE IN RESEARCH



Gembloux Agro-Bio Tech  
Université de Liège





# PhD Students

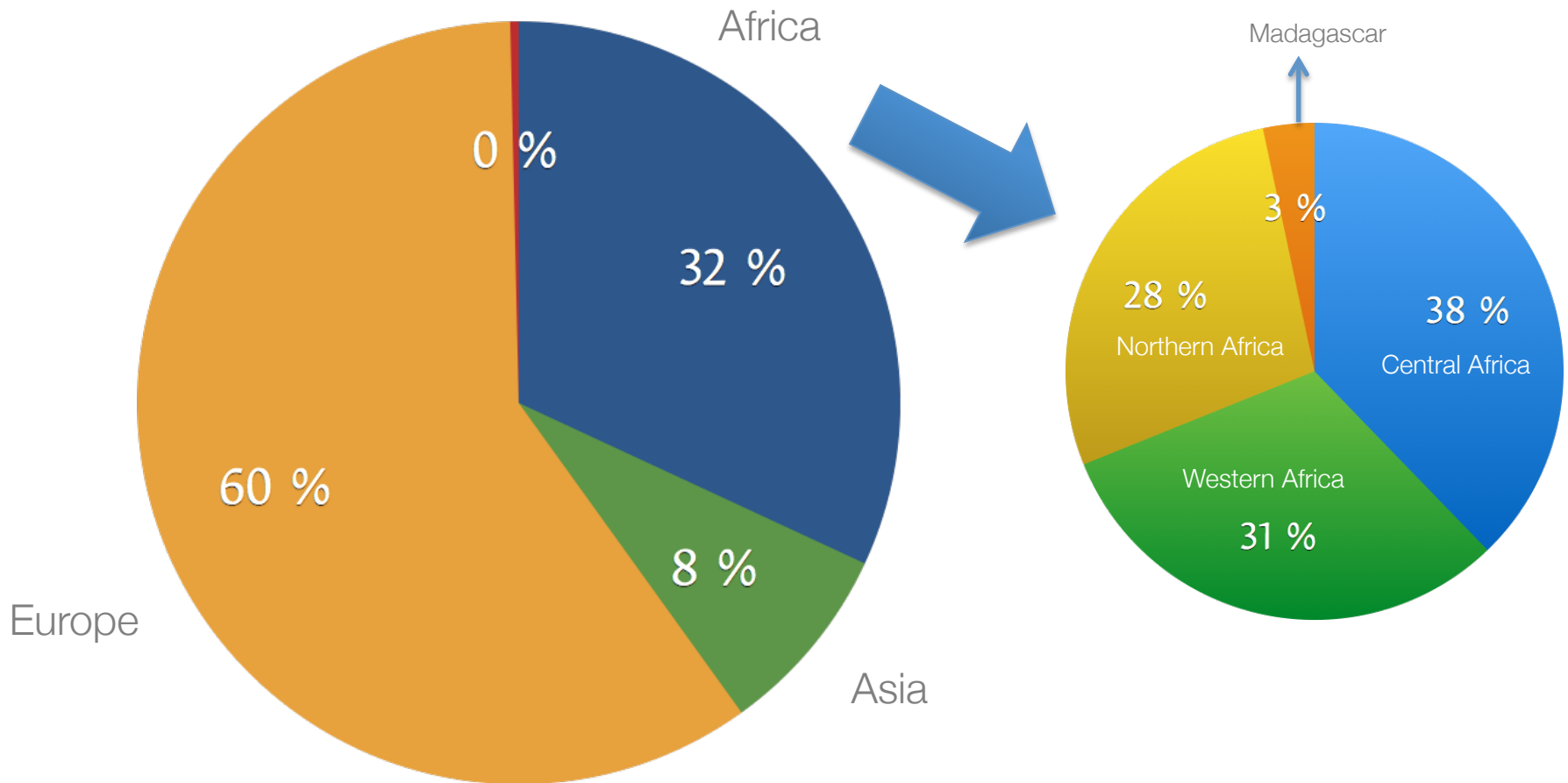
Erasmus Staff Training, Liège, 3/2015

- 282 PhD students
- 35 PhD degrees in 2013-2014
- 40% of female PhD students
- 52% of foreign PhD students
- 33 different nationalities



# PhD students by nationality

Erasmus Staff Training, Liège, 3/2015





# Staff: some figures...

Erasmus Staff Training, Liège, 3/2015



- Total staff of the faculty: 456
- Academic staff: 41
- Administrative and technical staff: 210
- Scientific staff: 205



HR EXCELLENCE IN RESEARCH



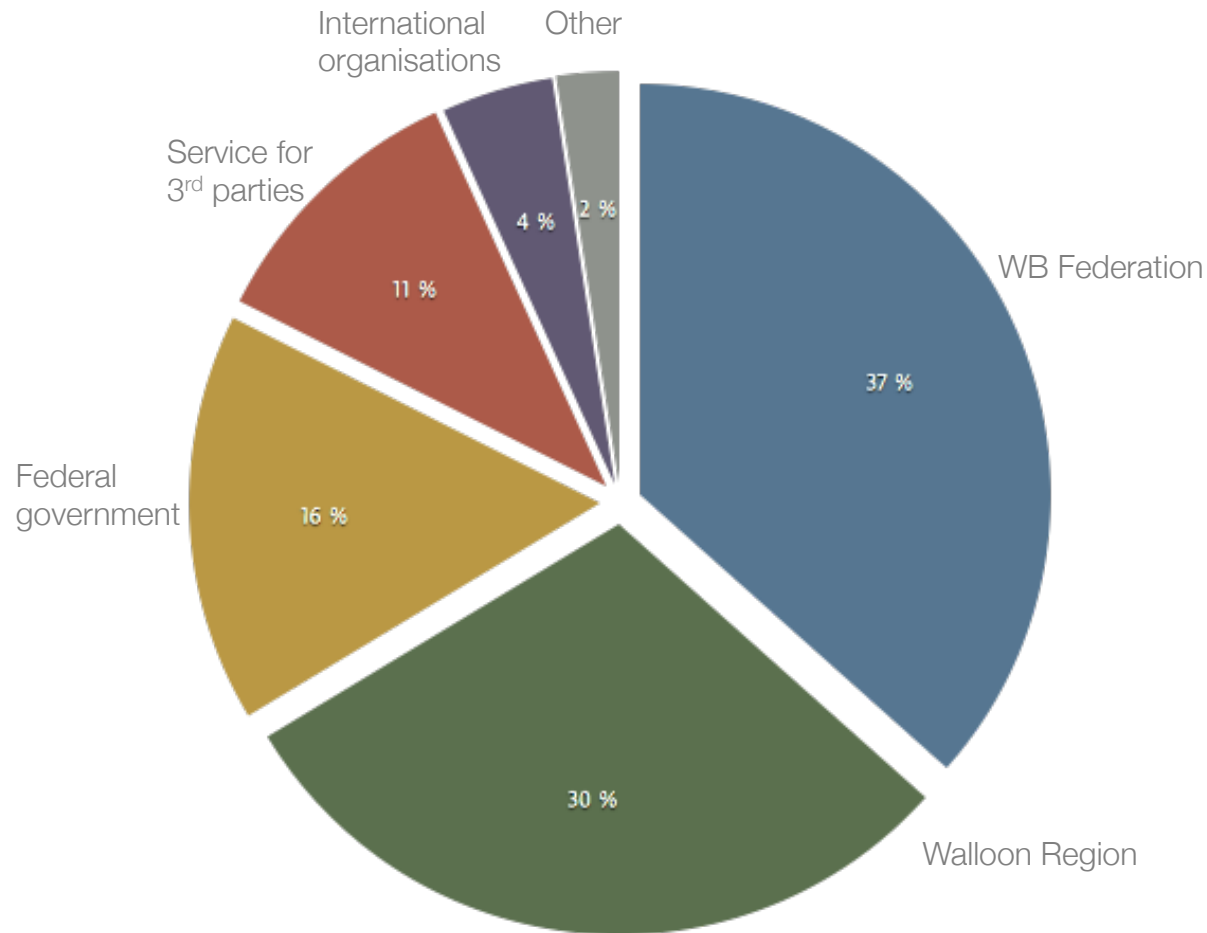
Gembloux Agro-Bio Tech  
Université de Liège





# Funding for scientific staff

Erasmus Staff Training, Liège, 3/2015





# Research within GxABT

Erasmus Staff Training, Liège, 3/2015

Université  
de Liège



- New research centre called TERRA
- 3 main components : Agriculture, Food and Environment
- € 15 billion investment
- 150 to 200 researchers
- Fully effective in 2015



HR EXCELLENCE IN RESEARCH



Gembloux Agro-Bio Tech  
Université de Liège





# AgriculturelsLife

Erasmus Staff Training, Liège, 3/2015

Université  
de Liège



- A research platform to develop the agriculture of tomorrow
- Research farm (50ha) with 7 experimental zones
- Started in March 2013 - 16 PhD students
- 4 main concerns: performance of non-conventional agro-ecosystems, valorisation of agricultural residues, tools & technologies, alternative valorisation of agricultural products
- Agreement with CAAS (China) for 80 PhD students



HR EXCELLENCE IN RESEARCH



Gembloux Agro-Bio Tech  
Université de Liège





# FoodIsLife

Erasmus Staff Training, Liège, 3/2015

Université  
de Liège



- Effective in 2016
- Intermediary step between fundamental research and industrial application
- Will reinforce the Gembloux expertise in the valorisation of agri-resources
- Different rooms with professional equipment and laboratories for research teams, useful for the transformation of raw material into final products
- Tuning for different operations, in order to develop molecules for research and to support the development of innovative firms



HR EXCELLENCE IN RESEARCH



Gembloux Agro-Bio Tech  
Université de Liège





# EnvironmentsLife

Erasmus Staff Training, Liège, 3/2015

Université  
de Liège



- Building of an ECOTRON in 2015: study of the impact of global change on plants on 3 different levels
- Aim: to get a better understanding of responses of living organisms, from molecular scale to organism scale, under environmental constraints
- Result: consistent long-term observations accessible to a wide range of users
- Part of the Plant Growing Technology Platform of the Communauté française de Belgique



HR EXCELLENCE IN RESEARCH



Gembloux Agro-Bio Tech  
Université de Liège





# Structure of the presentation

Erasmus Staff Training, Liège, 3/2015

Université  
de Liège



1. Introduction to the Faculty
- 2. Presentation of the integration process into the ULg and specificities**
3. Importance of an Euraxess contact point in Gembloux
4. Examples of difficult situations



HR EXCELLENCE IN RESEARCH



Gembloux Agro-Bio Tech  
Université de Liège





# Integration and specificities

Erasmus Staff Training, Liège, 3/2015

Université  
de Liège



- Faculty integrated within ULg, but different campus (70kms away from Liège)
- Service d'aide à la vie étudiante: multitask (social service, life quality, accomodation)
- Enrolment office: part of the central office in Liège
- Strength: **proximity** (big family)
- One specificity: development cooperation



HR EXCELLENCE IN RESEARCH



Gembloux Agro-Bio Tech  
Université de Liège





# A bit of history...

Erasmus Staff Training, Liège, 3/2015

- **1860**: State Agronomic Institute
- **20<sup>th</sup> century**:
  - Latin America (ESALQ Brazil, UNALM Peru)
  - DR of Congo
- **2009**: Integration in the ULg (est. 1817) – Gembloux Agro-Bio Tech



VUE GÉNÉRALE DE L'INSTITUT



# Specificities

Erasmus Staff Training, Liège, 3/2015

- 2009: integration within ULg
- 2012: Creation of PACODEL (centre for partnership and development cooperation)
- 2015: institutional platform in Central Africa





# Development cooperation

Erasmus Staff Training, Liège, 3/2015

Université  
de Liège



- PACODEL created in **2012**
- Headquarters in Gembloux
- Missions: promote, coordinate and enhance development cooperation
- Priority: multidisciplinary



HR EXCELLENCE IN RESEARCH



Gembloux Agro-Bio Tech  
Université de Liège

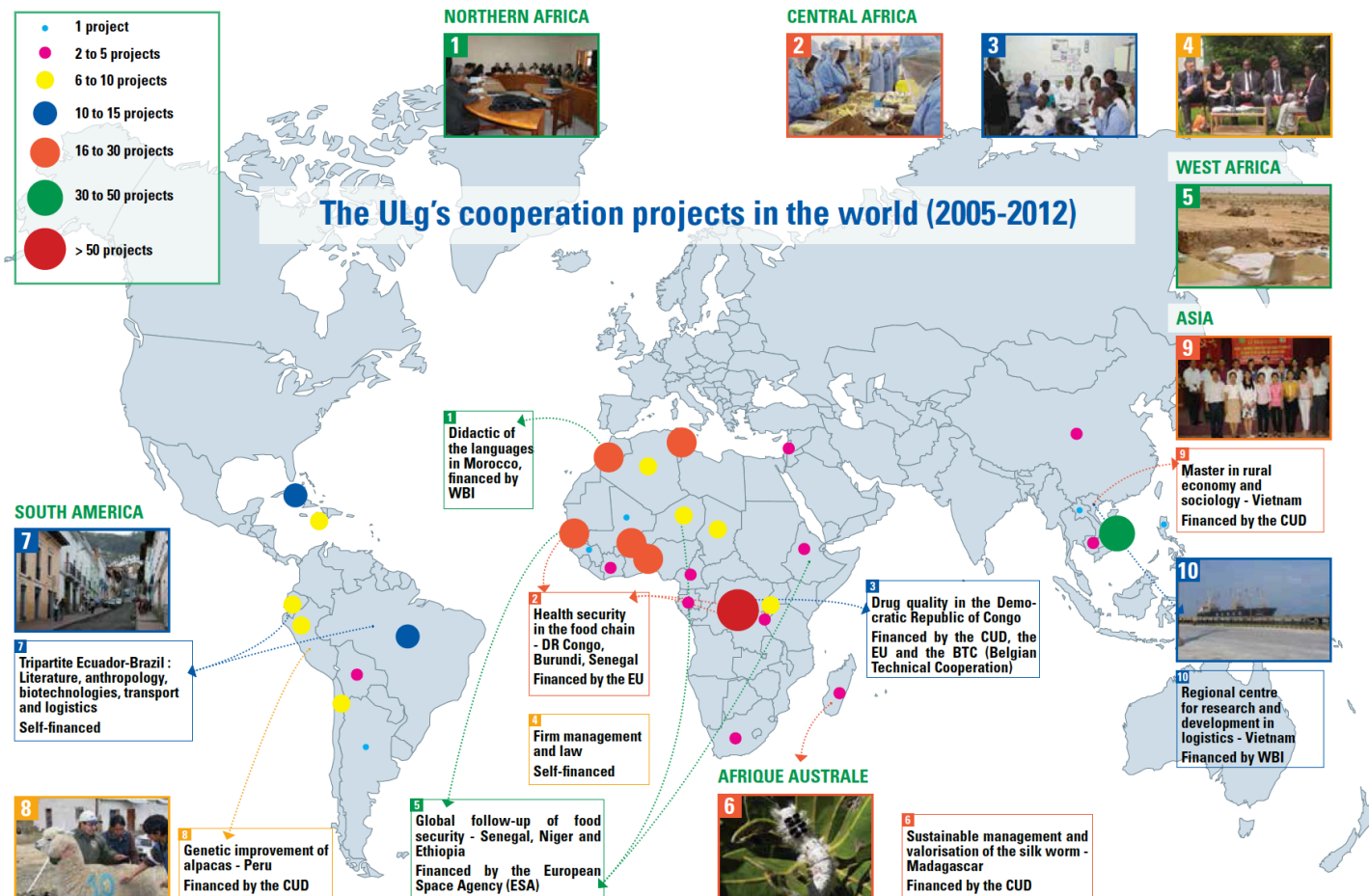




# Development cooperation

Erasmus Staff Training, Liège, 3/2015

Université  
de Liège





# Platform in Central Africa

Erasmus Staff Training, Liège, 3/2015

Université  
de Liège



- Permanent structure to develop in Central Africa projects around research, teaching and university expertise
- One theme: **periurbanisation**
- One local partner: ERAIFT
- Coordination in Kinshasa
- 5 local PhD thesis (co-tuition)



HR EXCELLENCE IN RESEARCH



Gembloux Agro-Bio Tech  
Université de Liège





# Structure of the presentation

Erasmus Staff Training, Liège, 3/2015

Université  
de Liège



1. Introduction to the Faculty
2. Presentation of the integration process into the ULg and specificities
- 3. Importance of an Euraxess contact point in Gembloux**
4. Examples of difficult situations



HR EXCELLENCE IN RESEARCH



Gembloux Agro-Bio Tech  
Université de Liège





# Euraxess contact point

Erasmus Staff Training, Liège, 3/2015

Université  
de Liège



- Why an Euraxess contact point in Gembloux? For the **proximity with researchers**
- Very good welcome culture: Gembloux as a big family → *Small is beautiful*
- Gembloux as **intermediary** between students/researchers and the central administration
- Contacts with the Euraxess central service: mainly through emails, telephone, physical meetings when needed...



HR EXCELLENCE IN RESEARCH



Gembloux Agro-Bio Tech  
Université de Liège





# Euraxess contact point

Erasmus Staff Training, Liège, 3/2015

Université  
de Liège



	Strengths	Weaknesses
<b>Quality of service</b>	Faster and more personalised	Transmission of information
<b>Size of the campus</b>	Everything in one place	
<b>Geographical situation</b>	Central in Belgium	Further away from the central administration
<b>Personnel</b>	Multitasking	Lack of information due to distance
<b>Services offered</b>	Many proximity services (enrolment, social service, accomodation) + PACODEL	Go-between with central administration
<b>Languages</b>	Big hub for French-speaking countries	Working knowledge of English
<b>Town</b>	Practical town (everything nearby)	Small town (less student jobs, less choice for hotels and accommodation)



HR EXCELLENCE IN RESEARCH



Gembloux Agro-Bio Tech  
Université de Liège





# Examples of hosting

Erasmus Staff Training, Liège, 3/2015



- Often a personalised welcome from the professors/colleagues: at the airport / station + at university/in town
- Erasmus Mundus with ACP countries / Science without Borders: PACODEL is informed and organises the arrival of the scholarship holder → File managed in Liège, PACODEL as go-between



HR EXCELLENCE IN RESEARCH



Gembloux Agro-Bio Tech  
Université de Liège





# ARES-CCD researchers

Erasmus Staff Training, Liège, 3/2015

Université  
de Liège



- The Belgian professor completes a form
- ARES-CCD informs the PACODEL about the researcher's arrival
- PACODEL manages the arrival of the researcher, welcomes her/him and helps him throughout her/his stay
- No contact with the central administration, except for some financial purpose



HR EXCELLENCE IN RESEARCH



Gembloux Agro-Bio Tech  
Université de Liège





# Space for improvement

Erasmus Staff Training, Liège, 3/2015

Université  
de Liège



- Growing importance of PACODEL
- From next academic year: **accommodation** search **online**
- Meetings organised for better communication
- **Chinese courses** are organised within the faculty, in collaboration with the Confucius Institute in Liège (hosted within ULg)



HR EXCELLENCE IN RESEARCH



Gembloux Agro-Bio Tech  
Université de Liège





# Chinese courses

Erasmus Staff Training, Liège, 3/2015

Université  
de Liège



- 你好! (nǐ hǎo)
- 很高兴认识你 (Hěnxìng rènshi nǐ)
- 你们是哪国人? (Nǐmen shì nǎ guó rén)
- 我们是欧洲人 (Wǒmen shì ōuzhōurén)
- 谢谢 (Xièxie)
- 再见! (Zàijiàn!)



HR EXCELLENCE IN RESEARCH



Gembloux Agro-Bio Tech  
Université de Liège





# Chinese courses

Erasmus Staff Training, Liège, 3/2015

Université  
de Liège



- *nǐ hǎo* – Hello
- *Hěn gāoxìng rènshi nǐ* – Glad to meet you
- *Nǐmen shì nǎ guó rén?* – What is your nationality?
- *Wǒmen shì ōuzhōurén* – We are Europeans
- *Xièxie* – Thank you
- *Zàijiàn!* – Goodbye!



HR EXCELLENCE IN RESEARCH



Gembloux Agro-Bio Tech  
Université de Liège





# Structure of the presentation

Erasmus Staff Training, Liège, 3/2015

Université  
de Liège



1. Introduction to the Faculty
2. Presentation of the integration process into the ULg and specificities
3. Importance of an Euraxess contact point in Gembloux
- 4. Examples of difficult situations**



HR EXCELLENCE IN RESEARCH



Gembloux Agro-Bio Tech  
Université de Liège





# Difficult situations

Erasmus Staff Training, Liège, 3/2015

Université  
de Liège



- Fake degrees
- Identity theft
- Accommodation booked and no notice for late arrivals
- Bad understanding of distances (accommodation/enrolment)



HR EXCELLENCE IN RESEARCH



Gembloux Agro-Bio Tech  
Université de Liège





# Some specific cases

Erasmus Staff Training, Liège, 3/2015



- A student enrolled at ULg, having a student room in Liège but not knowing courses are taught in Gembloux
- Students enrolled in (interuniversity) advanced masters in Gembloux, but with options on other campuses (Liège/Arlon) or in other universities



HR EXCELLENCE IN RESEARCH



Gembloux Agro-Bio Tech  
Université de Liège





Thank you! 谢谢! Gracias!  
Obrigado! Kiitos! Dziękuję!  
Tak! Bedankt! Danke! Merci!



L. de Potter, Head of International Relations for GxABT / PACODEL  
Executive Secretary – [laurent.depotter@ulg.ac.be](mailto:laurent.depotter@ulg.ac.be)